

The Innovation Network



SCHULER
FIRMENGRUPPE



GLOBALTEK



SCHULER KONSTRUKTIONEN

Engineering, Design,
Documentation

ENTECH

Product Development,
Simulation, FEM
Calculation

ROHTECH

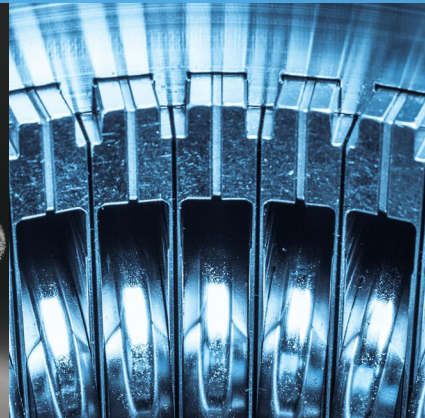
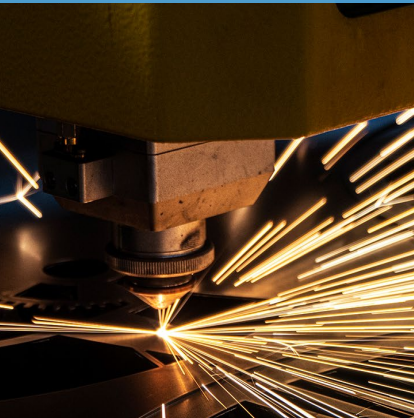
Engineering Automotive
Planning, Manufacturing,
Simulation, Design for
Automotive needs

ROHTECH-DST

Engineering Production
lines, Automotive,
Aerospace

SHF

Logistic
Technologies,
Intralogistics



SHM

Special Machine
Development, Plant
Construction,
Assembly Technology

OPAL

Machine Development
for Machining
Processes

SYTECH

IT- and Software
Technologies

KOLIBRI

Additive Manufacturing,
3D-Print of Tools Steels
and Carbide Metals
(MMC)

WEBO

Tool Manufacturing, Part
Production, Part
Development

SCHULER INDEPENDENT COMPANIES GROUP

As a worldwide technology leader in the areas of tool and special machine construction, series parts manufacturer and component developer, we meet the high demands of our global clientele on a daily basis.

In addition to precision and delivery reliability, our quality is always in the foreground. Since 2019, we have been a reliable supplier for services, material science, tactile and non-contact 3D measurement technology. If required, we can analyse materials technology issues for you in our in-house laboratory. WEBO is certified according to DIN EN ISO 9001.



The Business Units of WEBO

Part Engineering and Prototyping

- Sketching
- Design
- FEM Analysis
- Simulation
- Prototype Production
- Test Benching
- Spin test, Lube test,
- Crashing

Tool and Machine Engineering

- Tool Design in Catia, Inventor, Pro-E, NX
- Machine Integration
- Process Simulation
- Automation Design and Simulation
- Measurement Devices
- Manufacturing Machine Design and Build
- Global Processing at Customers Site
- Robot Units
- Automated Carrier solutions

Part Production

- Pressed Part Production/ Stamping in smaller Lot Sizes
- Part Assembly
- Cleaning, Deburring and Washing
- Painting
- Quality Reporting
- Individual Marking
- Logistics
- Seaworthy Shipping
- Auditing and Implementation for high Volume production

SRAM



Additive Manufacturing / 3D Metal Print

- MMC (Metal Matrix Composites) Part Production
- HSS Steel and carbide steel 3D printings
- Powder Engineering – Tool Steel Grades with Carbides and Diamonds
- Powder Sales
- Part Engineering with selected MMC
- Test and Laboratory Facility for 3D Printed Components
- 3D SLM Consulting



Produktion Disinfection Systems

- UV-C Lamp Disinfection
- Aerosol Disinfection
- Disinfection Simulation
- Disinfection Robots
- Hospital / Floor Screening
- Disinfection Consulting
- Global Processing at Customers Site



Total Customer Care

We follow the needs of our customers – world wide.

Different countries > different tailor made solutions!

Innovations shown in 58 patents!

We are proud to serve!

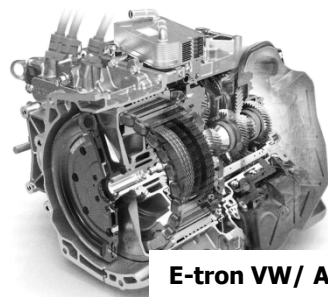


Hard fact development. After the soft fact phase the hard fact phase encloses. Different kind of prototypes - fully milled up to complete formed like in a serial process are one of the main core technology's of WEBO.

Latest Projects:



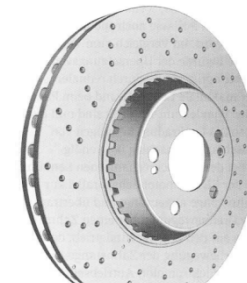
E-tron VW/ Audi



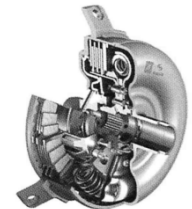
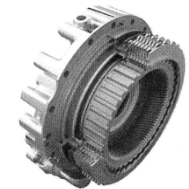
E-tron VW/ Audi



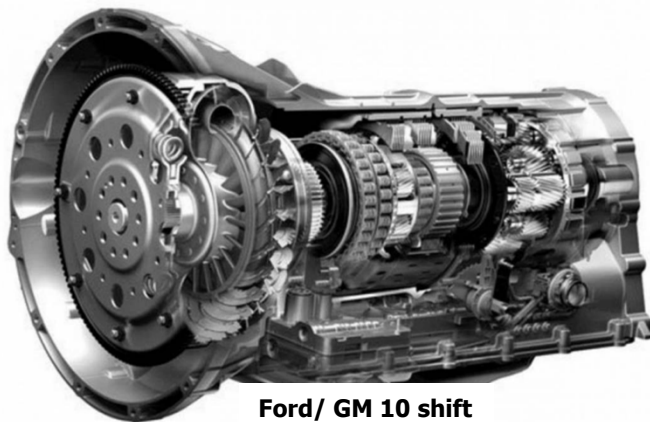
Magna 4 wheel



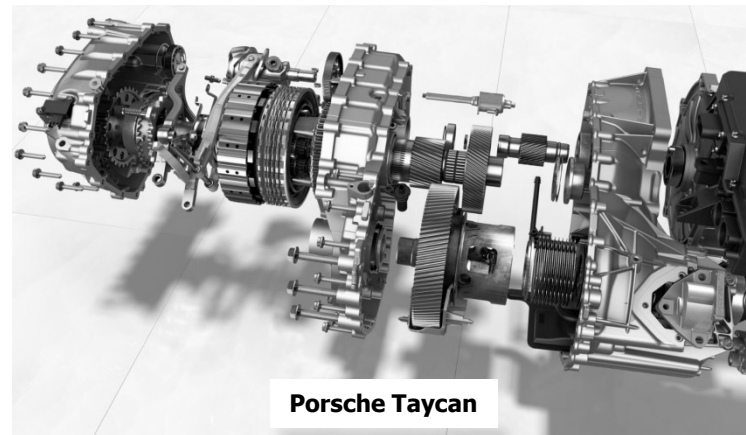
Daimler brake system



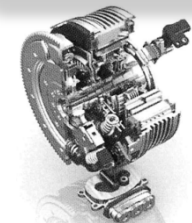
Several transmission units ZF, Valeo, Daimler, Hyundai, etc.



Ford/ GM 10 shift



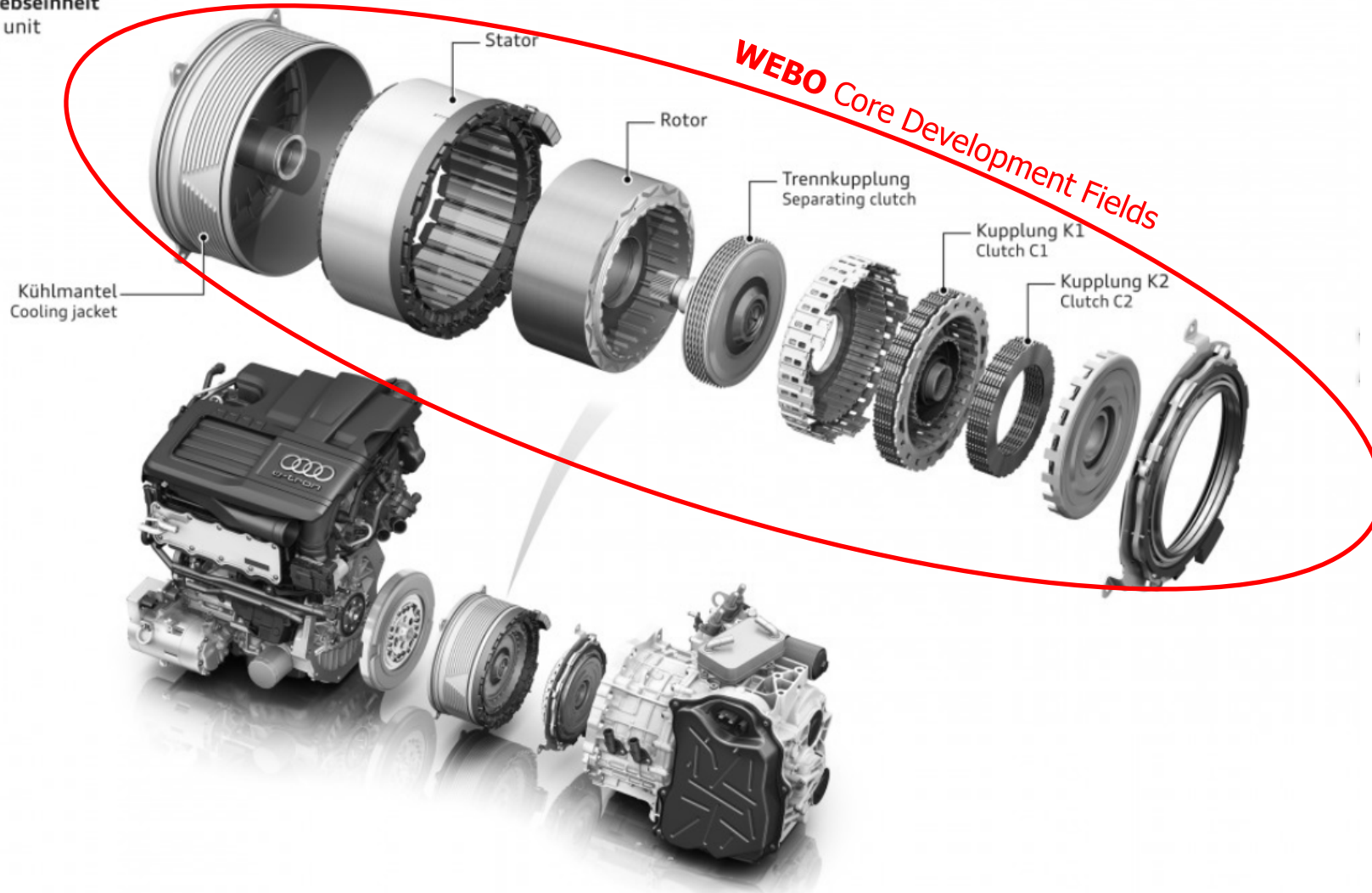
Porsche Taycan



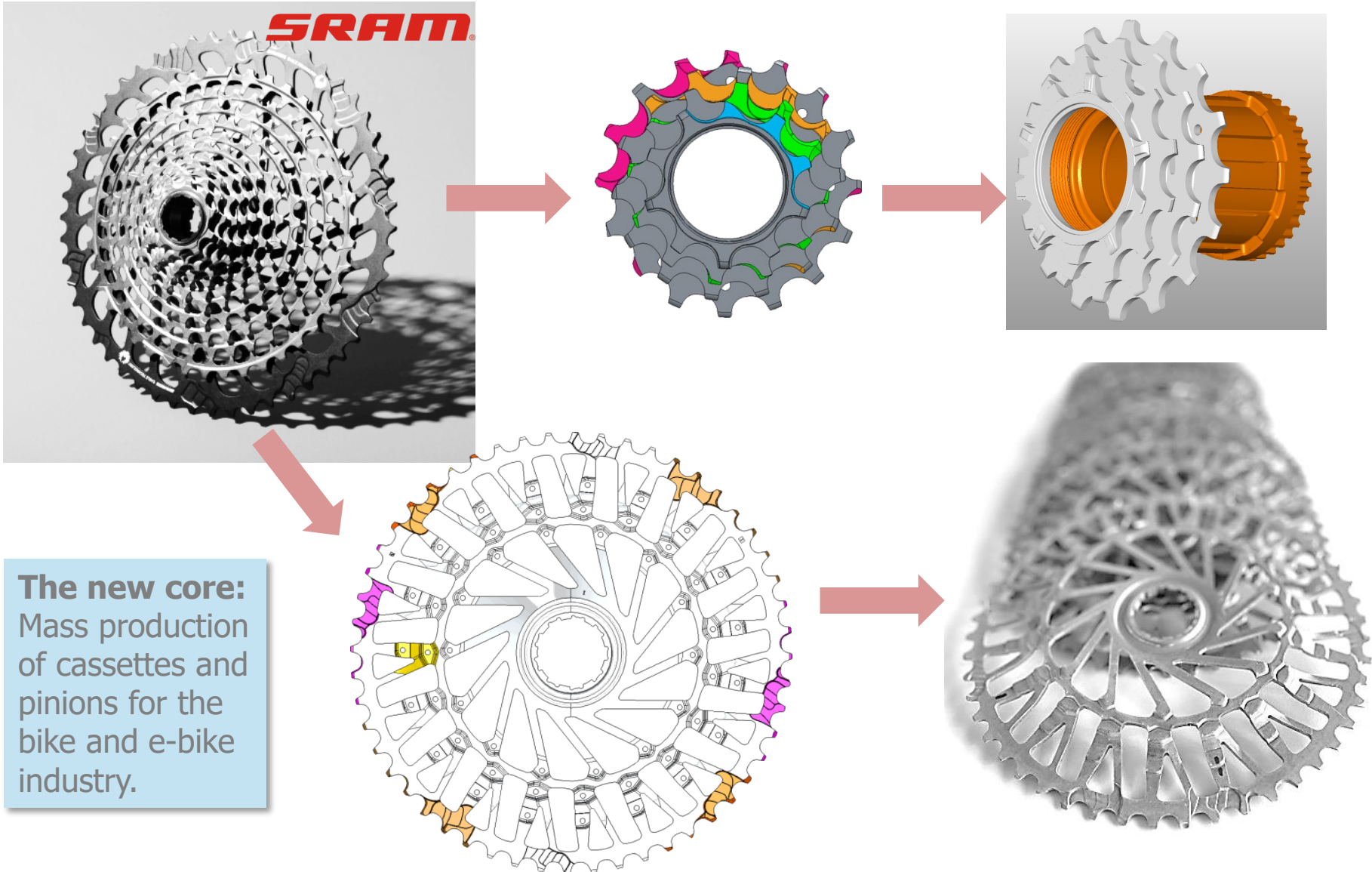


Audi A3 Sportback e-tron

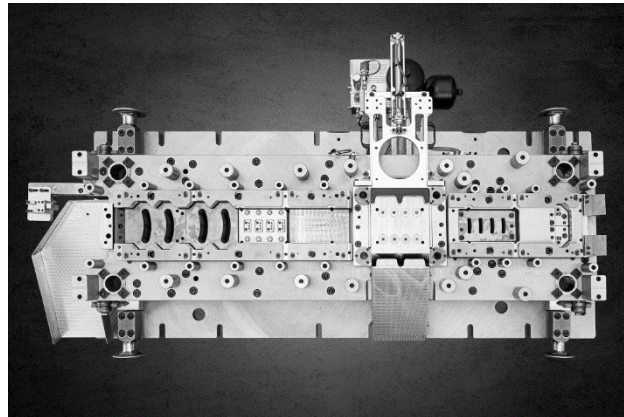
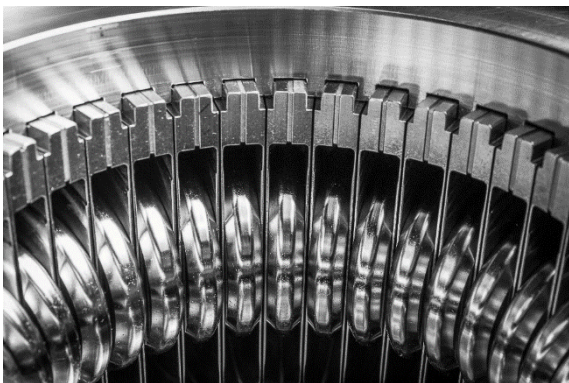
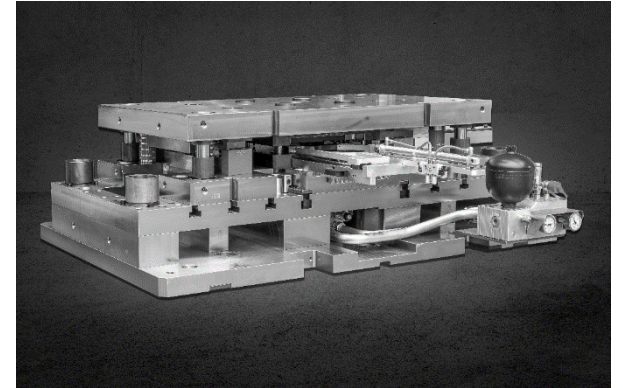
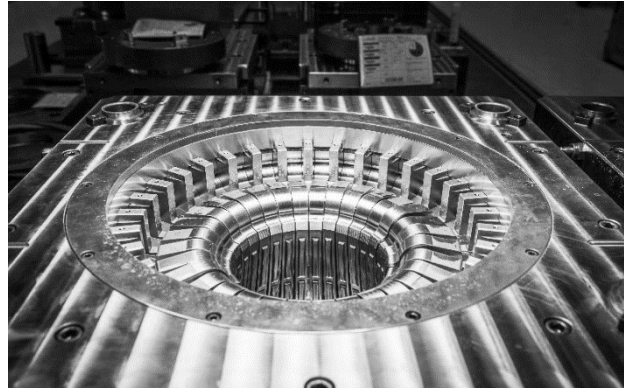
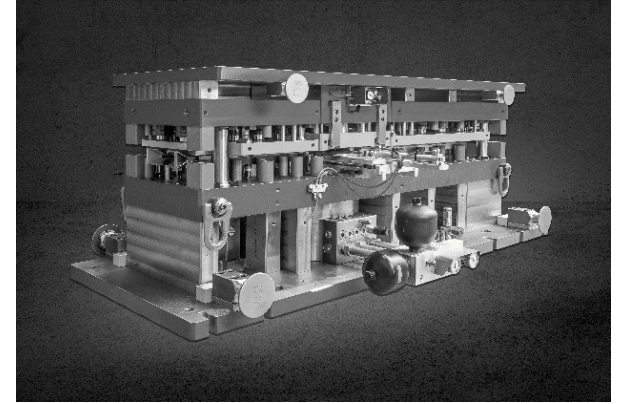
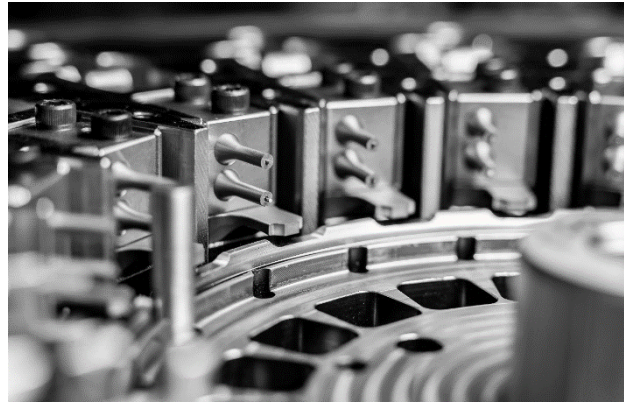
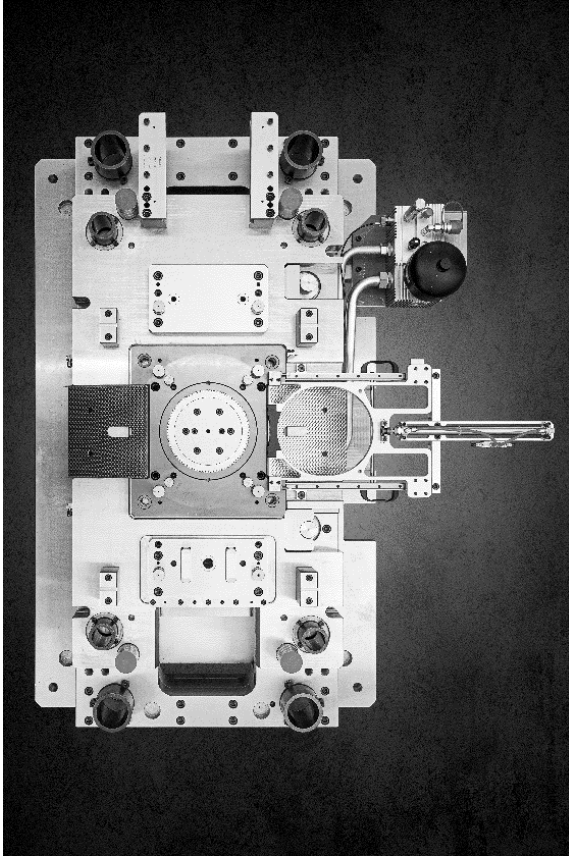
Antriebseinheit
Drive unit
06/13

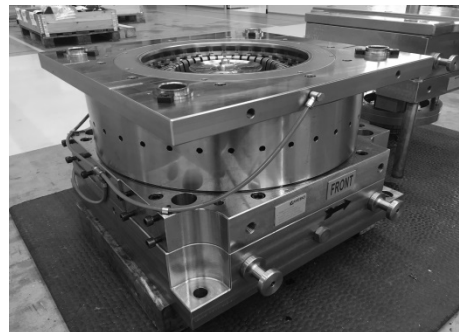
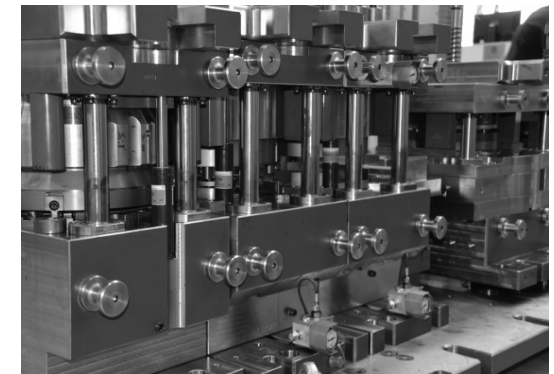
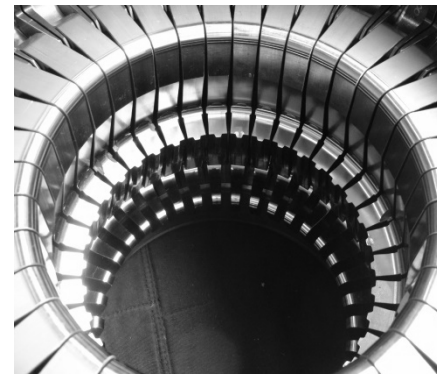
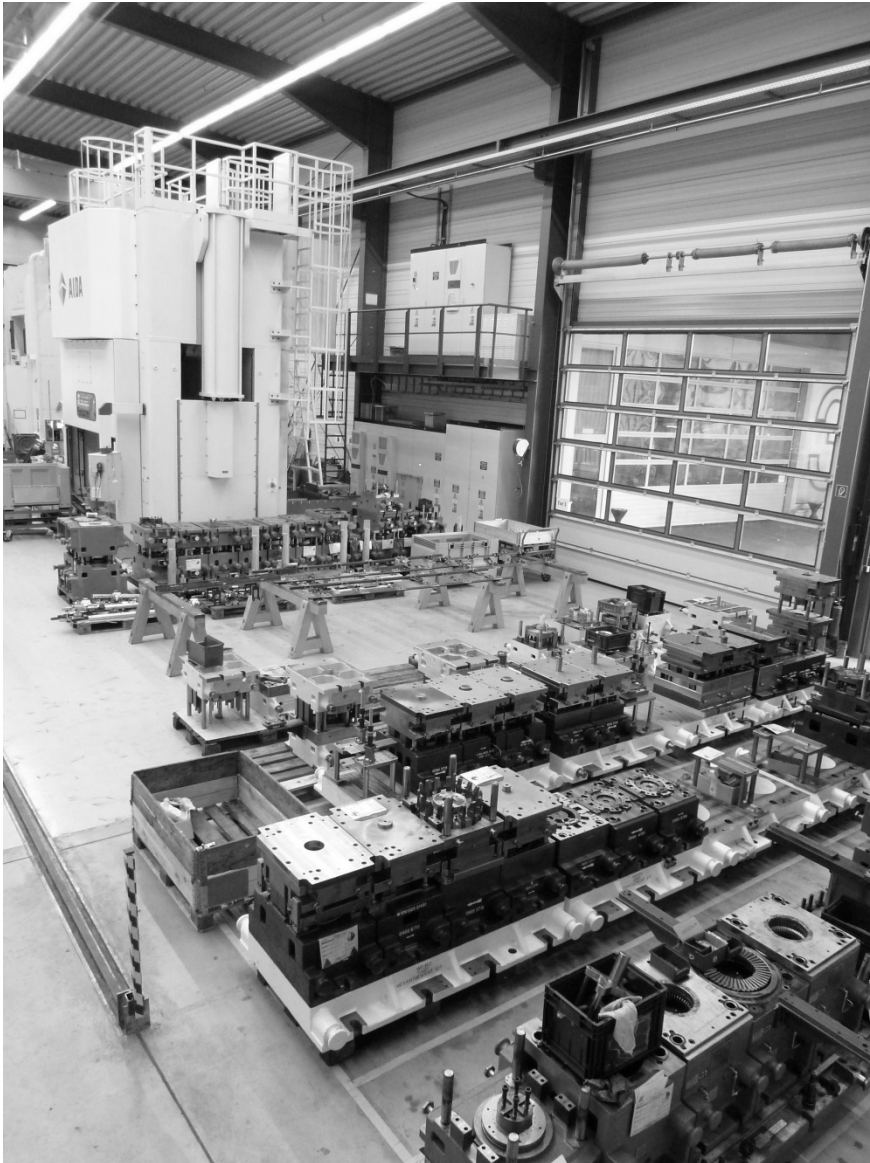


WEBO Core Development Fields

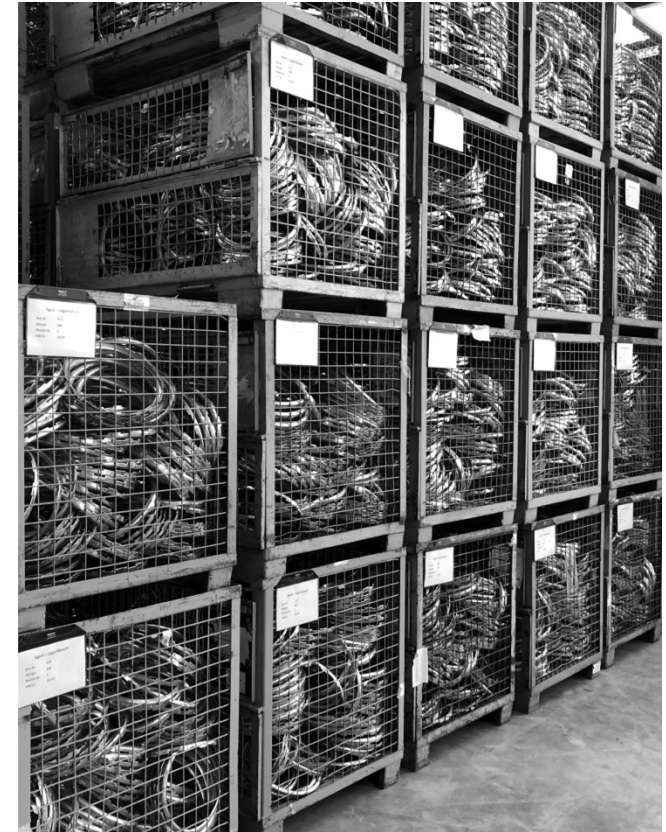
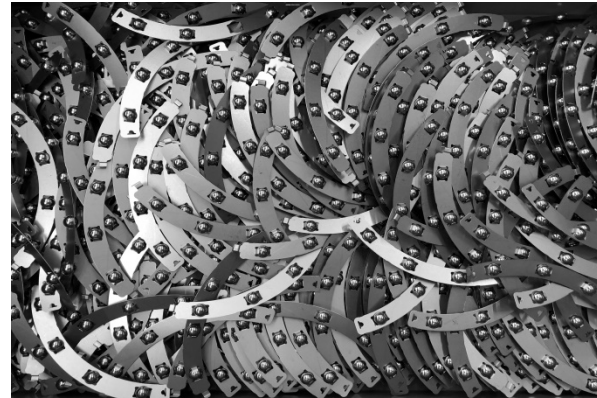


The new core:
Mass production
of cassettes and
pinions for the
bike and e-bike
industry.





Production possibilities for smaller lots. For the automotive industry and all production needs with smaller lot sizes WEBO Germany will give with their automated presses up to 6300 kN competitive answers.



- Cleaning system suitable for cleaning, degreasing and preserving metal, glass, ceramics and plastics, which are contaminated with organic and inorganic impurities.
- Cleaning takes place in a vacuum and with solvent – pressure goes from atmospheric to less than 1 mbar absolute (important for hollow solids)
- Components are placed in baskets and subjected to an individually adaptable washing program
- The components are washed in the basket, which is also located directly afterwards in the charging rack of the furnace
- Cleaning in individual batches and materials one after the other incl. process control and protocols.



- Plant is used exclusively for solution annealing, hot aging and quenching of aluminium parts – e.g. for alloy 1.7075 (so-called Aircraft aluminium)
- Consisting of two overhead furnaces and a heatable quenching unit
- The electrical controlled heating of the furnace system is arranged vertically in the air ducts and consists of chrome-nickel heating coils, which are insulated and held by ceramic rings. This technology allows a distributed and homogenic temperature gradient throughout the furnace
- Solution annealing up to 480 degrees Celsius possible, hot aging takes place in several stages up to 200 °C for several hours
- Up to a maximum of 700 kg can be loaded, in designated charging racks
- Basic dimensions of the charging racks 1500x1500x970mm

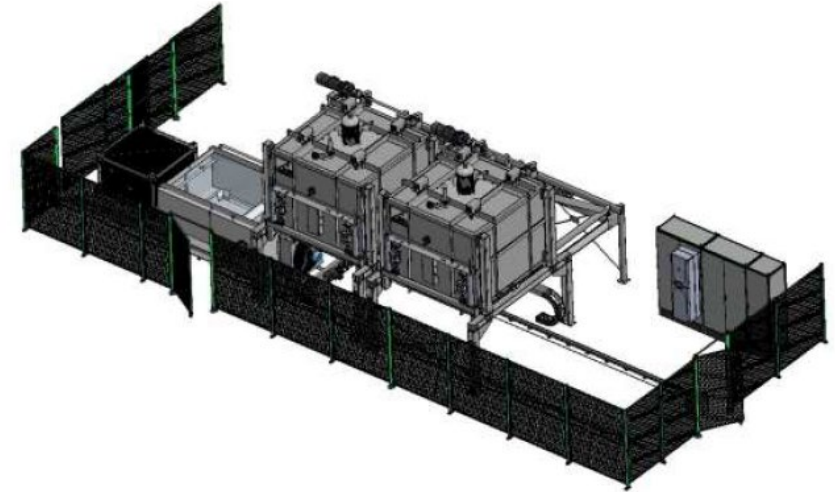


Abbildung: Ove unit



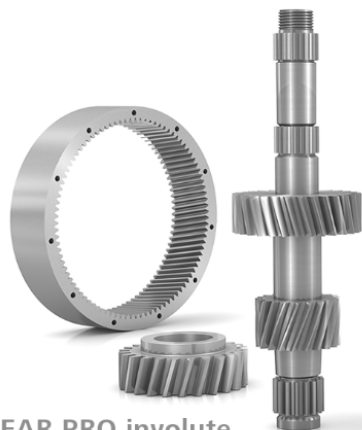
Pic: Charging Rack

- Components can be positioned in corresponding load carriers on the charging rack, e.g. baskets
- The baskets, which are also intended for washing the components, can in turn be equipped with devices, e.g. hardening carriers or directly as bulk material containers
- Dimensions of baskets 670x475x400mm
- Operating weight up to 80 kg for basket possible
- Alternatively, components can be placed directly in the charging rack so that full use is made of the useful dimensions.
- The process is freely programmable as a fully automatic process.



Abbildung: Chargierung
mit 12 Körben

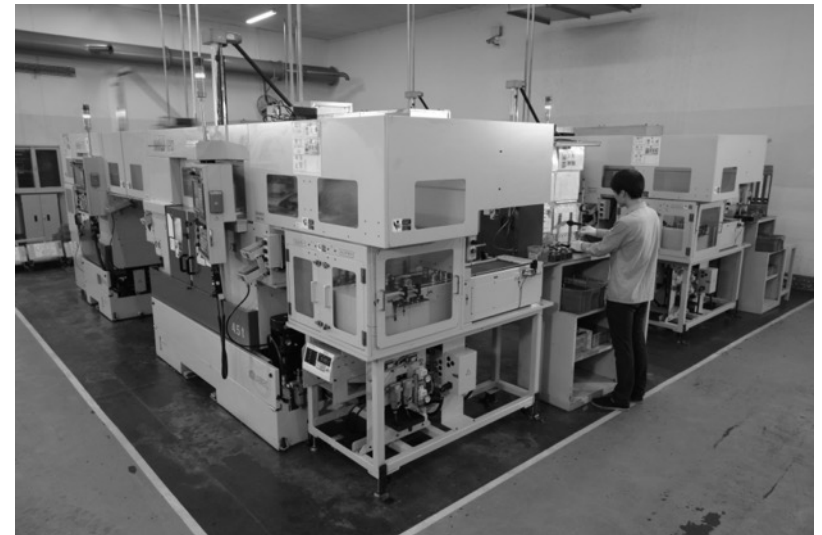
High precision needs control. With our quality equipment we are on all manufacturing plants outstanding equipped. Zeiss, Wenzel, Mitutoyo, Vision and GOM are our base equipment.



ZEISS GEAR PRO involute







High standard need save rules. Certifications for save and reliable processes and zero fault deliveries.

Here the list of our Certifications for your kind analysis:

WEBO GmbH: ISO 9001, ISO 14001, sustainability certificate in preparation

Kolibri Metals GmbH: ISO 9001, ISO 14001, sustainability certificate in preparation

Schuler Design Group – all remaining members: ISO 9001;

GlobalTek on different locations for the customer and product circle:

ISO 9001, ISO 14001, IATF 16949, ISO 13485, AS 9100D, NASCAP Chemical Processing, GE-GT 193 Certificated, SAFRAN DMP 12-031 Certificated, SAFRAN –FAL Certificated, SPP Special Process Approval



We love what we are doing...



Kontakt:

WEBO GmbH
Hummelau 3
88279 AMTZELL – GERMANY

phone +49 (7520) 91495-0
fax +49 (7520) 91495-69

info@webo.de.com
www.webo.de.com

